



# HMF 2810K-RCS

Product flyer



## Multifunctionality with many options

Our HMF 2810K is one of our most popular cranes. It comes with a wide range of options as well as economic benefits for you. The low tare weight and reduced space requirements of the crane provides for full utilization of the truck body and lower fuel consumption, which means cost savings. The design is service-friendly which makes maintenance easy, and the clean design with internal hose routing leaves fewer parts exposed, thus protecting them from external damage. All to ensure you low costs of ownership.

### Why choose the 2810K?

- A 7.4 stabilizer spread (optional) provides for extra stability and avoids the extra weight and costs of a separate traverse
- The crane is suitable for demanding lifting tasks
- Dual link arm system ensures strength, stability and speed in all boom positions

PERFORMANCE	2810K2-RCS	2810K3-RCS	2810K4-RCS	2810K5-RCS	2810K6-RCS	2810K7-RCS	2810K8-RCS
Load moment (tm)	25.7	25.2	24.6	24.2	23.8	23.4	23.0
Hydraulic reach (m)	8.3	10.3	12.5	14.8	17.1	19.3	21.6
Weight excl. stabilizers (kg)	1895	2065	2265	2415	2555	2660	2745
Weight of stabilizers, standard (kg)	290	290	290	290	290	290	290
Lift-to-weight ratio	11.8	10.7	9.6	8.9	8.4	7.9	7.6
Slewing angle (°)	400	400	400	400	400	400	400
Slewing torque (kgm)	2763	2763	2763	2763	2763	2763	2763
Working pressure (bar)	365	365	365	365	365	365	365
GEOMETRY							
Height above mounting surface (mm)	2295	2295	2295	2295	2295	2295	2335
Width, folded (mm)	2500	2500	2500	2500	2500	2500	2500
Length of crane, no extra valves (mm)	885	885	885	885	885	995	995
Over-bending on crane (°)	15	15	15	15	15	15	15

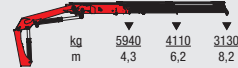
## BASIC FEATURES

Electronic speed adaptation system, HDL-D/HD5
Slew Braking Control (SBC)
Progressive Crane Control (PCC)
Priority Flow Control (PFC)
Single Power Plus link arm system
Proportional control valve PVG 32
Internal hose routing

## SELECTED OPTIONS

<b>SPECIAL OPTIONS</b>
Hydraulic hoist 1500 kg or 2500 kg
<b>STABILITY AND SAFETY</b>
Electronic Vehicle Stability (EVS)
AutoSwitch (ASW)
Monitoring of stabilizer legs down (CYL)
Monitoring of stabilizer beams fully extended and stabilizer legs down (CYBEL)
Monitoring of stabilizer beams in each side, boom system orientation and stabilizer legs down (2CYBEL)
Cabin Anti-Crash (CAC)
Alarm flash on stabilizer legs
<b>EXTRA VALVES</b>
1 or 2 extra valves
Extra valves in hose guides
Extra valves in hose reels, internally in the jib extensions
Extra valves in hose reels, externally
Multi-coupling for 2 extra valves in hose guides
<b>STABILIZER BEAMS AND LEGS</b>
Hydraulic or manual stabilizer beams from 5.6 m to 7.4 m
Hydraulic swing-up stabilizer legs
Manual swing-up stabilizer legs with gas spring
Footplate with ball joint on stabilizer legs
<b>HYDRAULICS</b>
Oil tank 90 l mounted on the crane
Oil tank 150 l mounted on the crane
Oil cooler with temperature monitoring, medium size (q=0.3 kW/°C) or big (q=0.4 kW/°C)
2 or 4 radio remote controlled available stabilizer functions
Radio remote control of stabilizer beams and stabilizer legs on crane
2 manually controlled available stabilizer functions (manual stabilizer beam)
4 manually controlled available stabilizer functions (hydraulic stabilizer beam)
<b>CONTROL STATIONS</b>
Stand-up control with bracket for remote control box
Top seat on column with bracket for remote control box

2810K2-RCS



2810K3-RCS



2810K4-RCS



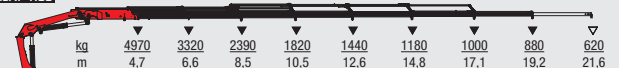
2810K5-RCS



2810K6-RCS



2810K7-RCS



2810K8-RCS



▼ Lifting capacity, no manual extensions  
 ▽ Lifting capacity with manual extensions

For more information visit  
[hmfcranes.com](http://hmfcranes.com)